

Future of Car Shade

# Umax Modular Commercial Solar Carport



GoodWe Polaris Series Solar Panel



## Features & Advantages



- Structure certified by Gamcorp
- CEC accredited solar panel



- Waterproof design
- Modular design



- Fast design & quotation
- Easy installation



- Solid steel shading structure
- 25-year design life

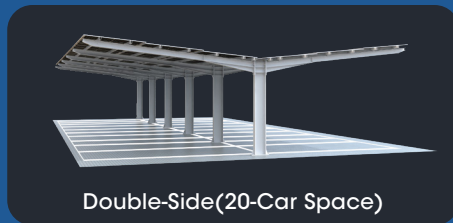
# Carport Specifications

## Structural Parameters

Material	Heavy Steel
Design Standards	AS/NZS1170 & AS4100
Wind Load Capacity	Wind Region A & B
Design Life	25 Years



Single Side(10-Car Space)



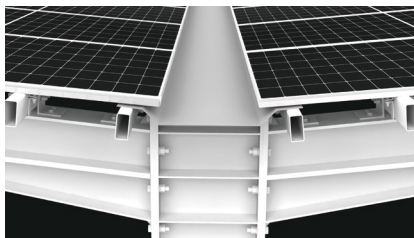
Double-Side(20-Car Space)

	Single side (10 Parking Space)	Double side (20 Parking space)
Power Output	38.52 kW	77.04 kW
Length	6500 mm	13000 mm
Width	2600 mm	2600 mm
Clearance Height	3000 mm	3000 mm
Peak Height	4200 mm	4200 mm
Solar Panels	GoodWe Polaris 535 W x 72 PCS	GoodWe Polaris 535 W x 144 PCS
Footing	At least 700mm diameter pier with 2000mm depth	At least 800mm diameter Pier with 2500mm depth

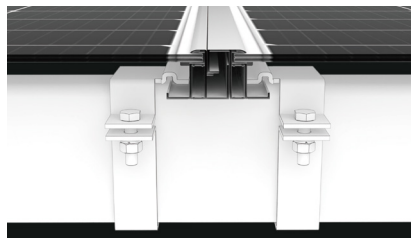
\*The system information above highlights Umaxs modular design approach. The car space width is assumed to be 2600mm.

\*Our design can be tailored to accommodate site conditions, including system size and carport structure dimensions.

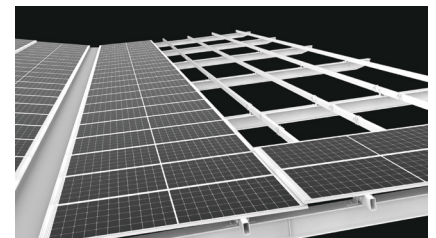
## Structure Details



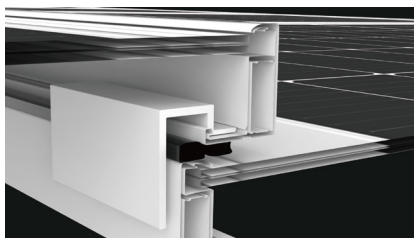
Innovative waterproof design on GoodWe Polaris Panel long frame



Stacking installation to prevent water leaking on short frame



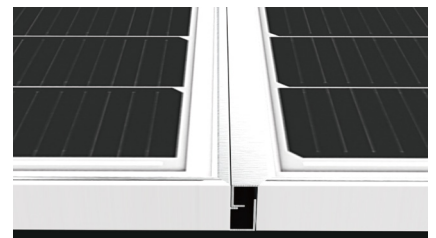
Underneath panel fixings for quicker and safer installation



Modular carport frame for easier designing and installation



Modular carport frame for easier designing and installation



Integrated hydraulic design to suit various site conditions



## Efficient BIPV Panels

GoodWe Polaris Series for Solar Carport

- Excellent self-cleaning ability
- Structural waterproofing
- Convenient installation
- Double-glass design