

**Turn Cost to Investment**

# Modular Design Residential Solar Carport

GoodWe BIPV Polaris Series



Gamcorp Certified Structure



CEC Certification



Adjustable Height & Lightweight



All-Aluminum Alloy

## Smart Upgrade Long-Term Saving

Why settle for a traditional carport when you can have the Polaris Solar Carport? This integrated waterproof solar carport not only protects your vehicle, but also provides free charging and power for your home, turning expenses into a smart investment.

With its modular design and quick 3-hour installation, the Polaris Solar Carport has a shorter payback period, resulting in long-term savings and peace of mind. Save money on electricity, reduce your expenses, and reap the benefits of sustainable living.

## Hassle-free Installation

### Structural Waterproof Panels



Integrated with GoodWe Polaris BIPV Panels, featuring a built-in waterproof structure with no glue required, for a tidy and aesthetically pleasing finish.

### Innovative Modular Design



We provide the versatility and adaptability required for any residential environment with our modular carport system. You can accommodate slopes with adjustable pole heights, guaranteeing a perfect fit for your space.

### Easy Installation



The lightweight construction allows for easy, personal installation without the need for heavy machinery, making it accessible to homeowners.

### Cost-Savings



Maximize space by sheltering your vehicle from wind and rain while also charging your EV for free and cutting your bill.

### Versatile Expansion Support



The system supports a variety of expansion features, including optional CCTV, lighting, and other household necessities.

### All-in-One

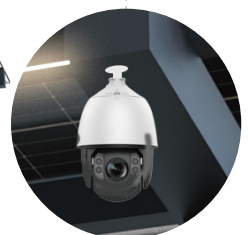


For convenience, the entire system comes in a single, integrated package, simplifying transportation and procurement.

## Optional Functions



Motion Sensor Light



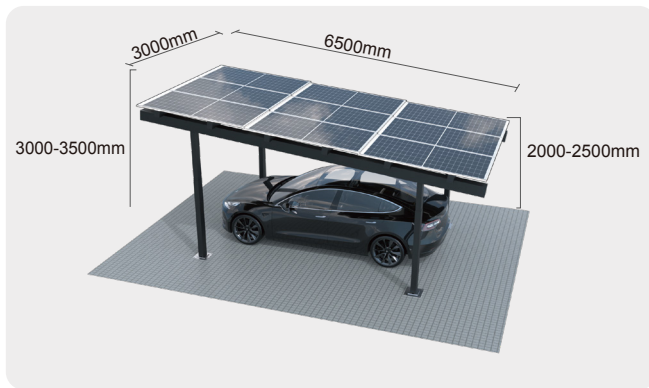
Smart Surveillance Camera

## Carport Specifications

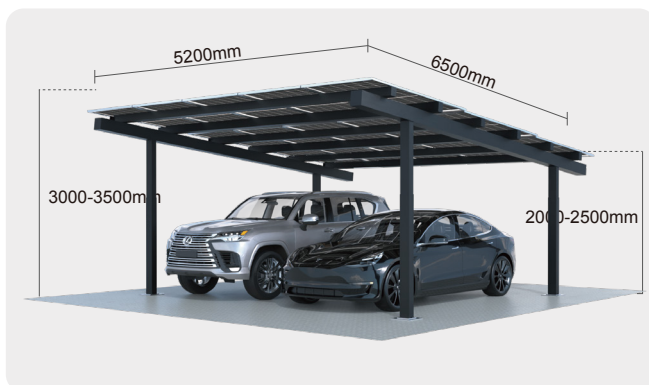


	Single	Double
Power Output	4.815 kW	8.025 kW
Carport Structure Length	6500 mm	6500 mm
Carport Structure Width	3000 mm	5200 mm
Carport Peak Height	3000-3500 mm	3000-3500 mm
Carport Clearance Height	2000-2500 mm	2000-2500 mm
Solar Panels	Polaris 535W x 9PCS	Polaris 535W x 15PCS

## Single Solar Carport Solution



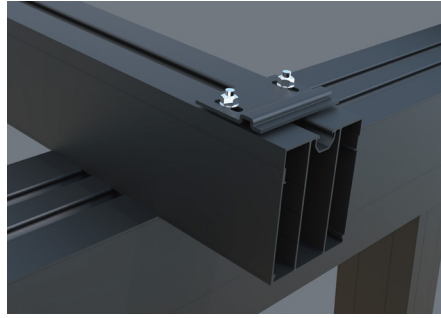
## Double Solar Carport Solution



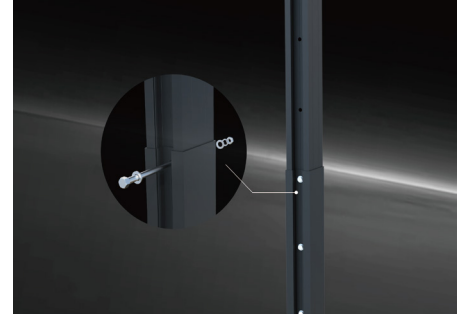
## Structure Details



Structurally Waterproof



Clamp Mounting



Adjustable Height

## Efficient BIPV Panels

GoodWe Polaris Series for Solar Carport



Excellent self-cleaning ability



Convenient installation



Structural waterproofing



Double-glass design

Panel Data	BMT-P2/132A
Size*	2142 x 1160 x 29.6mm
Weight	30±0.5kg
Cable	4 mm <sup>2</sup>
Cell Type	N-Type TOPCon Half Cells (132pcs)

Electrical Data (STC)	STC:AM=1.5, irradiance 1000W / m <sup>2</sup> , component temperature 25° C
Power (W)	535W
Efficiency (%)	21.5%
Power / m <sup>2</sup> (W / m <sup>2</sup> )	215W / m <sup>2</sup>
Voltage at Max Power (Vmpp)	41.47V
Voltage at Open Circuit (Voc)	48.21V
Current at Max Power (Impp)	12.90A
Current at Short Circuit (Isc)	13.60A



GOODWE AUSTRALIA PTY LTD.



2/6 Enterprise Drive, Rowville, Victoria 3178 Australia



AU\_bipv@goodwe.com



www.goodwe.com.au/pvbm-solution



1300950868